

# Breydel®

HAM SPEK

Proef gezelligheid!!



# Policy of Breydel for the protection of the environment





## PERMIT OF EXPLOITATION

Analyse everything concerning the factory

- list up all kind of installations, machines and products
- description and estimation of production (quantity)

+

+ consider the impact on the environment:

→ the production of **waste** + **waste water**

→ the possible pollution of **air, soil**

→ the possible hindrance of **sounds,**  
**light**(spots) and **odour**

→use of **energy**



## WASTE PRODUCTS: separate collection

- Paper
- Plastics
- Other (remains in production)
- Fat & bones
- Inktcartridges



## WASTE PRODUCTS: separate collection

- Silt of fat from the well
- Fat from the sieve
- Salt water (production proces)
- Sludge from the waste water installation



Collected by recognised firms, registered in files and reported to the government



## WASTEWATER Cycle

From: cleaning and cooking process

To: purifying aerobic plant



## WASTEWATER purification steps one cycle

1. Pumping in
2. Denitrification (no oxygen)
3. Aeration (nitrification + demolition organic components)
4. Denitrification
5. Aeration
6. Release of air
7. Sinking
8. Discharge



## WASTEWATER

- Follow up the **installation** (technical)
- Registration of the **parameters** and report to the government
- Make up a **waterbalance** by registration the consumption and amount of discharged water

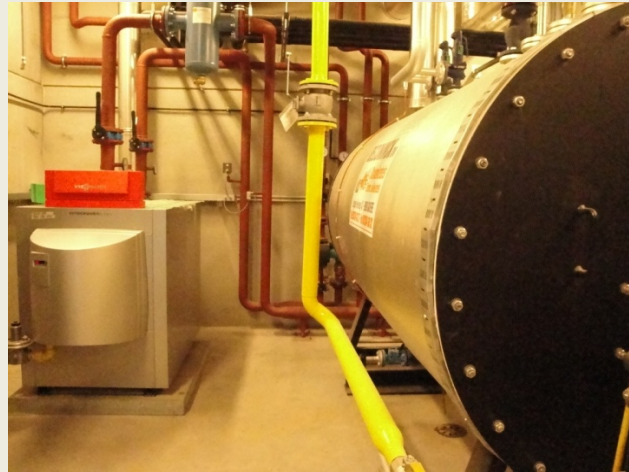




## Possible POLLUTION OF AIR



HCFK's from the cooling systems



Heating installations for the production of heat and steam

Follow up the emissions and perform the required tests and maintenance of the installations



Cooking and smoking

## Avoid POLLUTION OF SOIL

- The storage and right use of dangerous products (cleaning products)  
→implement legal obligations
- The research (compelled by Law) of possible pollution



## Possible HINDRANCE OF NOICE, LIGHT and ODOUR

### NOISE

- Ventilation systems (lower speed) and condensors
- Compressors (acoustic isolated technical block)
- Traffic (system of circulation)
- Engines of the trucks (turn off)



### LIGHT

Spots (with detection of motion)

### ODOUR

By the cooking processes

(location of the factory and prevention by research)





## ENERGYSAVING INSTALLATIONS

### Heating of the water by:

1. Sunpanels (48m<sup>2</sup>) in boilers (4000l)
2. Recuperation of heat from the refrigeration compressors
3. Condensation boiler (kettle)



## ENERGYSAVING INSTALLATIONS

### OTHER:

- Ventilation system witch withdraws warmth from the air (heat pump with heat exchanger) in offices
- Frequency controlled pumps
- Energy saving light
- Sun blends
- Thermostatic taps on the radiators
- Isolation of the builing: K level <30 (norm is 55)



Future: fotovoltaïc sunpanels ( $\pm 200$ ) for the production of electricity ( $\pm 40$  MWh/year)

## ENERGY MANAGEMENT

- Control the facturation
- Registration the consumption of energy (monthly-year)
- Registration kWh production by sunpanels
- Calculation of indicators
- Follow up energy market and make a deal (contract) with suppliers
- Maintenance of the system



## GENERAL RULES

- Follow up the **legislation**
- **Advise** and introduction of **environmentally products and systems**
- **Control** everything in practice on regularly base + make up a **tasksystem**
- Good internal **communication** by information sessions and contact by visists on the workplace

